

Durastroke 1530 (FLP) Pneumatic Kit



- Fail-In-Last Position design operation
- Pre-Assembled
- Pre-Plumbed
- Factory Calibrated
- Durable Cast Aluminum Housing
- Long Life Actuator Diaphragm
- Automatic Louver Control
- Field Installation requires only connecting two air lines and control signal
- Stainless Steel Travel Stem
- Aluminum Clevis
- Available for Extreme Duty



Airtech Products, Inc.
1550 S. 81st W. Avenue
Tulsa, OK 74127 Phone:
Phone 918-241-0264
www.airtechproducts.com

Technical Information

Actuator Construction

Aluminum Housing	356 -T6
Travel Stem	303 Stainless Steel
Clevis	6061-T6
Diaphragm (Standard)	Nitrile (Buna N) ASTM D1418
Operating Temperature (Std)	-40° F to 160° F
Operating Temperature (Extreme)	-60° F to 160° F (See Note)
(Note: Fisher 646 I/P Warranted only to -40° F)	
FLP Valve	Versa Valve VSP-2301-31

Operational

Consumption (Full Stroke)	.5	scfm
Consumption (at Positioner)	.24	scfm
I/P Transducer Consumption	.13	scfm

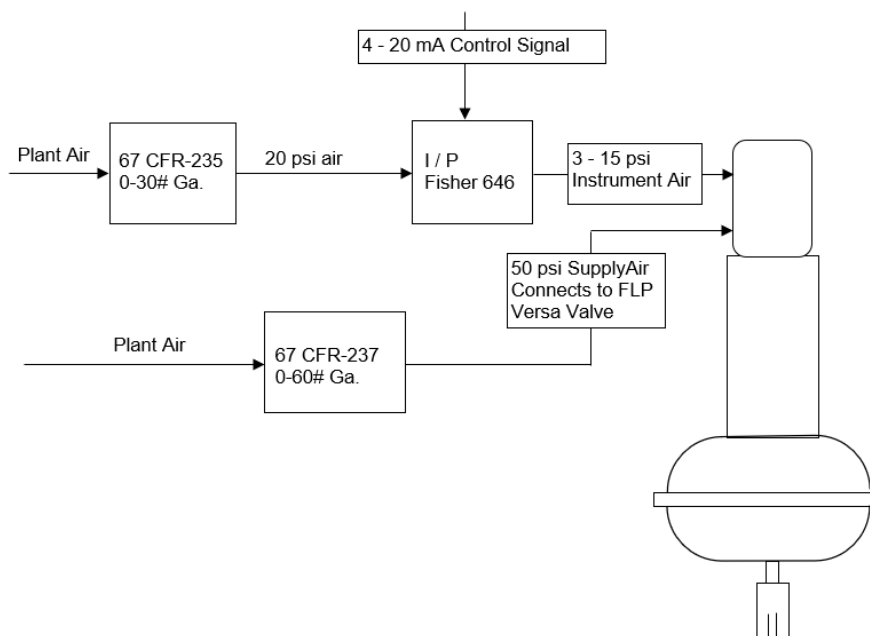
Stem Forces

- Net Extending Force (45 psig air) 1384 Pounds
- Net Retracting Force (spring preloaded) 320 Pounds

Stem Travel 3.5 inches

Weight 65 Pounds

Durastroke 1530 Pneumatic Kit



03-31-20