

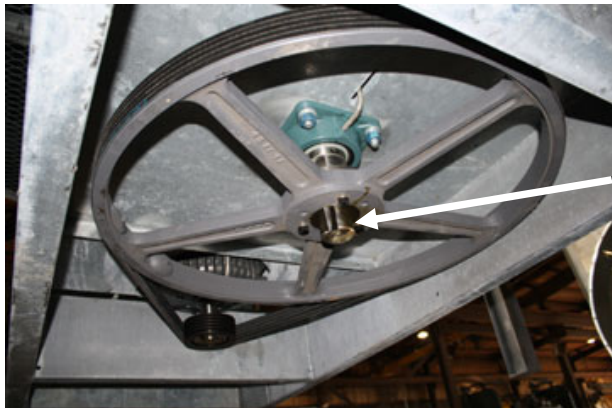
INSTALLATION INSTRUCTIONS

Drive Sentry, Gen2 Anti-Windmilling Device– Shaft Mount



Unpack box and lay out components. Check to ensure all the following are present:

- Qty 1: Drive Sentry Device
- Qty 1: Shackle
- Qty 1: Restraining Cable (10')
- Qty 2: Cable Clamps
- Qty 1: Loctite 262
- Qty 1: Installation Instructions



IMPORTANT NOTE !!!

- 5) Measure to confirm there is ***NO LESS THAN 1.5" OF SHAFT PROJECTION*** from the bottom of the sheave (or bushing) for attachment of Drive Sentry.

- 1) Align the 3/4" socket head set screw w/the fan shaft keyway and slide the Drive Sentry onto the fan shaft projection as far as it will go.
- 2) Apply Loctite 262 to threads and securely tighten
- 3) Apply Loctite 262 to threads and securely tighten

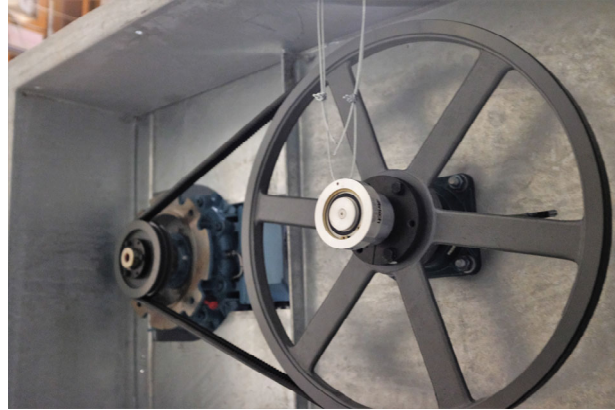


IMPORTANT NOTE:

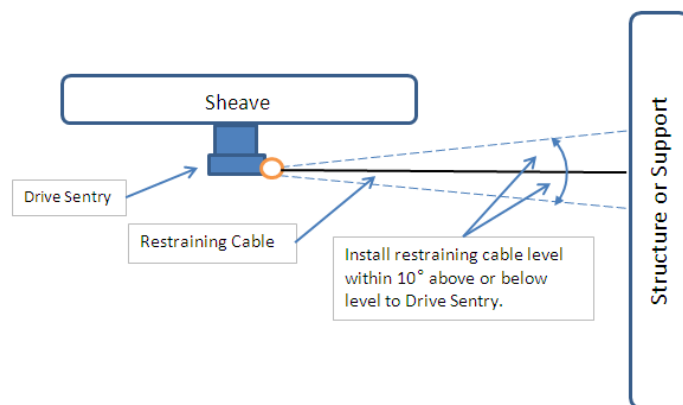
Drive Sentry maximum allowable rotation is 1200 RPM.

Temperature Limits are -40F to +200F

- 6) Stand clear of all moving equipment and “bump” the motor to confirm fan direction of rotation.
- 7) Also confirm the Drive Sentry has correct direction of free rotation and correct direction of restraint.
- 8) **AFTER CONFIRMING THE DIRECTION OF ROTATION IS CORRECT** thread one end of the restraining cable through the shackle and secure it using one of the two supplied cable clamps. Install the cable clamp using Loctite 262 on the clamp threads.



- 9) Apply Loctite 262 to the threads on the second cable clamp and secure the opposite end of the restraining cable to a sturdy support. Pull the cable taut to remove available slack and **complete the attachment with the cable no more than 10° above or below level.**
- 10) Ensure the restraining cable is not attached to or exposed to a sharp edge that would cause wear and failure.



- 11) By hand, attempt to rotate the fan backward to confirm the Drive Sentry restrains backward rotation.
- 12) Install all required guards and confirm the Drive Sentry has appropriate clearances for free operation and travel.
- 12) After all guards are installed run the fan at a full speed test to make final confirmation of the following:
 - Direction of rotation in operation
 - Proper clearances for Drive Sentry
 - Restraining cable is taut, free of slack and properly positioned

INSTRUCTIONS FOR REVERSING DIRECTION OF ROTATION

Drive Sentry Gen2 revolutionizes the industry by being the easiest, fastest and most convenient anti-windmilling device in existence.

Step 1:



Use .1875" Allen Wrench to remove the flat head screw at center of bottom plate on the bottom of Drive Sentry.

Remove the screw, lift off the center plate and set both to the side for immediate reinstallation.



Step 2:



Clutch Housing

Shaft Adapter

Lift the Clutch Housing off the assembly, Turn it over, align the keyway and reset it on the shaft adapter



Step 3:



Reset center cover plate to the middle of the now reversed Drive Sentry and secure in place by tightening the flat head screw with .1875" Allen Wrench.